

ZYGLO® ACCESSORIES

Hand Sprayers



Water Spray Gun

- ▶ For rinsing either water-wash or post-emulsifiable penetrants
- ▶ Coarse spray

Part #: 520090



Dry Developer Spray Gun

- ▶ Provides light, even developer coating
- ▶ Uses shop compressed air (dry)
- ▶ Features mix, jet and spread controls
- ▶ Two quart capacity

Part #: 521339



Hydro-Wash Spray Gun

- ▶ For water rinsing of parts
- ▶ Air injection boosts velocity, permits faster rinsing with less water usage
- ▶ Useful with low or fluctuating water pressure
- ▶ For spray distances over three feet or when rinsing hollow or rough surface parts

Part #: 518992



Portable Pressure Sprayer

- ▶ Lightweight pressure sprayer for spot application of penetrants, developers and cleaners
- ▶ Includes interchangeable nozzles for mist or pin spray
- ▶ Chrome-plated solid brass construction, one-quart capacity
- ▶ Pressurized with compressed air or with CO₂ cartridges to a maximum of 200 psi

Part #: 195260

NOTE: Ensure compatibility with governing specification that inspection work must meet before using this technique.

Water Pressure Gauge and Regulator



Water Pressure Gauge

- ▶ For use with water regulators

Part #: 513759



½ I.P.S. Water Pressure Regulator

- ▶ ¾" I.P.S. (#513757) and 1" I.P.S. (#513758) also available outlet ports
- ▶ Adjustable from 2 psig to 125 psig

Part #: 513756

Regulators and gauges for applications requiring strict water pressure control.

Hydrophilic Emulsifier Injector Kit



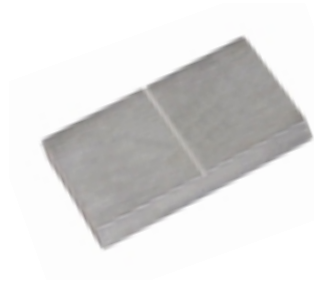
Hydrophilic Emulsifier Injector Kit

Automatically mix ZR-10B hydrophilic emulsifier (remover) with spray rinse water to combine emulsification and rinsing, leaving only a brief final wash. Three-way valve permits selection of water only or water plus remover spray.

- ▶ Dosatron Model Metering Injector
- ▶ For close range rinsing at spray distance up to 4'
- ▶ Externally adjusted
- ▶ Extremely accurate injection rates of 1-5%
- ▶ Flow rates up to 11 GPM

Part #: 609032

Test Blocks



Aluminum Test Block (for sensitivity)

- ▶ Cracked aluminum block compares sensitivity of different penetrants or sensitivity of new and old penetrants
- ▶ Complies with ASTM E165; ASME Boiler and Pressure Vessel code

Part #: 14755



Stainless Steel Test Block (for washability)

- ▶ Monitors washability of water-wash or post-emulsified penetrants
- ▶ Grit-blasted rough surface retains "background" when washability is impaired
- ▶ May be used repeatedly if thoroughly cleaned after each use
- ▶ Complies with ASTM E165

Part #: 154400

Comparators



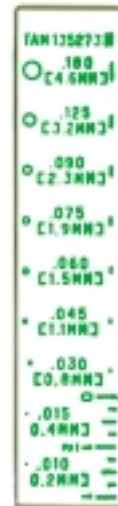
Crack Comparator

- ▶ General purpose crack comparator, 0.005" to 0.125" increments

Part #: 514048

Metric Crack Comparator

Part #: 514049



TAM Crack Comparator

- ▶ 0.010" to 0.180" increments
- ▶ Meets Pratt & Whitney requirements (P&W reference: TAM 135273)

Part #: 514050

Test Panels



NiCr Panels

The NiCr penetrant test panels are ideal penetrant sensitivity comparators. The panels are available with crack width of 10, 20, 30, and 50 microns and come in matched pairs. Individual crack sizes or a complete kit of all four sizes are available.

Having matched pairs enables studies of the effects of process changes as compared to a standard process, or used material changes vs fresh material. The panels are ideal for monitoring fluorescent penetrant (ZYGLO) lines.

Part #:	Description:
506251	One Pair of NiCr 10 micron panels
506252	One Pair of NiCr 20 micron panels
506253	One Pair of NiCr 30 micron panels
506254	One Pair of NiCr 50 micron panels
184400	NiCr Panel Set contains one pair of 10, 20, 30, and 50 micron crack size



TAM Panel

- ▶ 4" x 6" stainless steel panel monitors both sensitivity and washability of penetrant process
- ▶ Includes a rough surface for washability testing, plus a polished chrome section with 5 "star" shaped defects ranging in size from coarse to extremely fine
- ▶ Pratt and Whitney TAM #146040

Part #: 198055

Process Control Accessories



Hydrometer

- ▶ Uses specific gravity readings to monitor water based developer concentration and maintain optimum developer performance

Part #: 5857



Refractometer

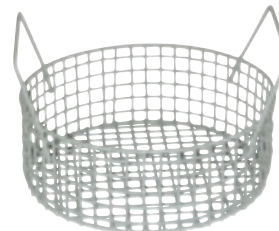
- ▶ Optical device used for measuring concentration of hydrophilic removers in water
- ▶ Includes chart to convert to percent concentration for ZR-10B ZYGLO hydrophilic removers

Part #: 513829

Purified Penetrant Wiping Cloths

- ▶ For use when specifications require certified pure wiping cloths
- ▶ Includes dispensing rack and manufacturer's certification
- ▶ Case of 12 rolls

Part #: 512302



Round Wire Basket

- ▶ 12" diameter nylon-coated processing basket
- ▶ Can be subdivided to prevent part-to-part contact
- ▶ Fits turntable of units with automatic rotary wash

Part #: 1962

Black Lights and Black Light meters (see pages 45–48)